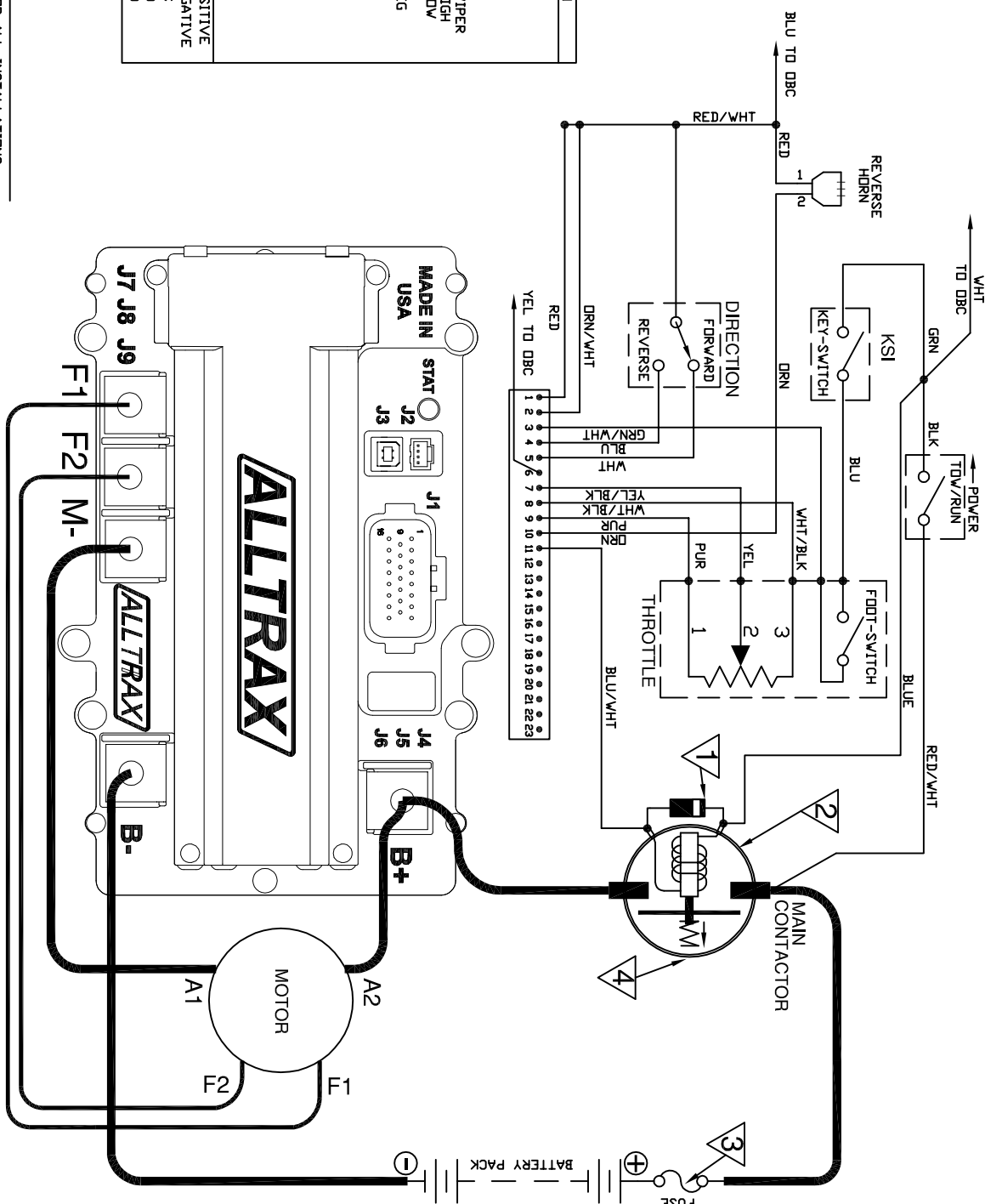


XCT to CLUB CAR PD PLUS SHUNT (SEPARATELY EXCITED) WOUND MOTORS

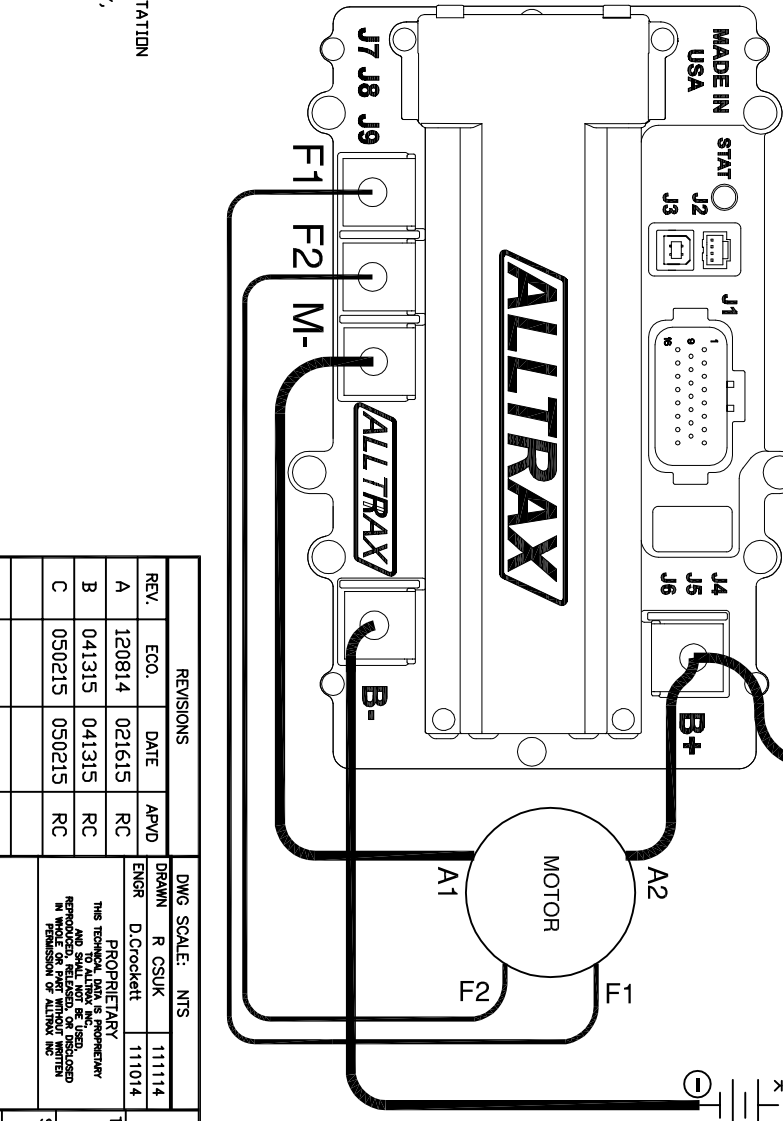
PART NO. DOC110-017



J1	FUNCTION
1	RUN/TDV
2	RUN/TDV
3	FDDTSWITCH
4	REVERSE
5	FORWARD
6	TD DBC
7	THROTTLE VIPER
8	THROTTLE HIGH
9	THROTTLE LOW
10	HORN NEG
11	SOLENOID NEG
12	NOT USED
13	NOT USED
14	TACH OUT
15	TACH REF
16	TACH NEG
17	NOT USED
18	NOT USED
19	NOT USED
20	NOT USED
21	NOT USED
22	NOT USED
23	NOT USED
B+	BATTERY POSITIVE
B-	BATTERY NEGATIVE
J9	MOTOR FIELD
J8	MOTOR FIELD
J7	MOTOR FIELD

NOTES:

- * FUSES REQUIRED FOR ALL INSTALLATIONS
- * DIODE REQUIRED ACROSS COILS / RELAYS
- * TDV/RUN SWITCH PREVENTS REGEN WHILE TOWING
- > ASSUMES FDDTSWITCH IS OPEN WHEN THROTTLE OFF
- > ALL TRAX RESERVES THE RIGHT TO CHANGE DOCUMENTATION WITHOUT NOTICE
- > ALL TRAX MAKES NO WARRANTY AS TO THE ACCURACY, SUFFICIENCY, OR STABILITY OF ANY TECHNICAL OR OTHER INFORMATION PROVIDED
- > SEE OPERATORS MANUAL FOR MORE INFORMATION



DIODE RATING	CONTACTOR RATING
1N4001	DEM 200A
1N5408	DEM 200A
MR754	400A

CONTACTOR RATING	CONTROL RATING
300A	DR 400A
200A	DR LESS
400A	TD 500A

FUSE	CONTROL RATING
ANN250	400A DR LESS
ANN400	450A DR MORE

PRE-CHARGE RESISTOR NOT NEEDED ON XCT UNITS

POWER WIRE	CONTROL RATING
6AVG-4AVG	300A
4AVG-2AVG	400A
2AVG-1/0AVG	500A

REVISIONS				DWG SCALE: NTS	
REV.	ECO.	DATE	APVD	DRAWN	R CSUK
A		120814	021615	RC	111014
B		041315	041315	RC	
C		050215	050215	RC	

ALLTRAX 1111 Cheney Creek Rd. Grants Pass, OR 97527 PHONE:(541) 478-3565	
TITLE	XCT to CLUB CAR PD PLUS
DESCRIPTION	Wiring Diagram
SIZE	DOCUMENT NO. DOC110-017
REV.	A S C

DO NOT SCALE DRAWING

FILE:DWG-XCT-CLUBCAR-PPPLUS-WIRE-DWG SHEET 1of1