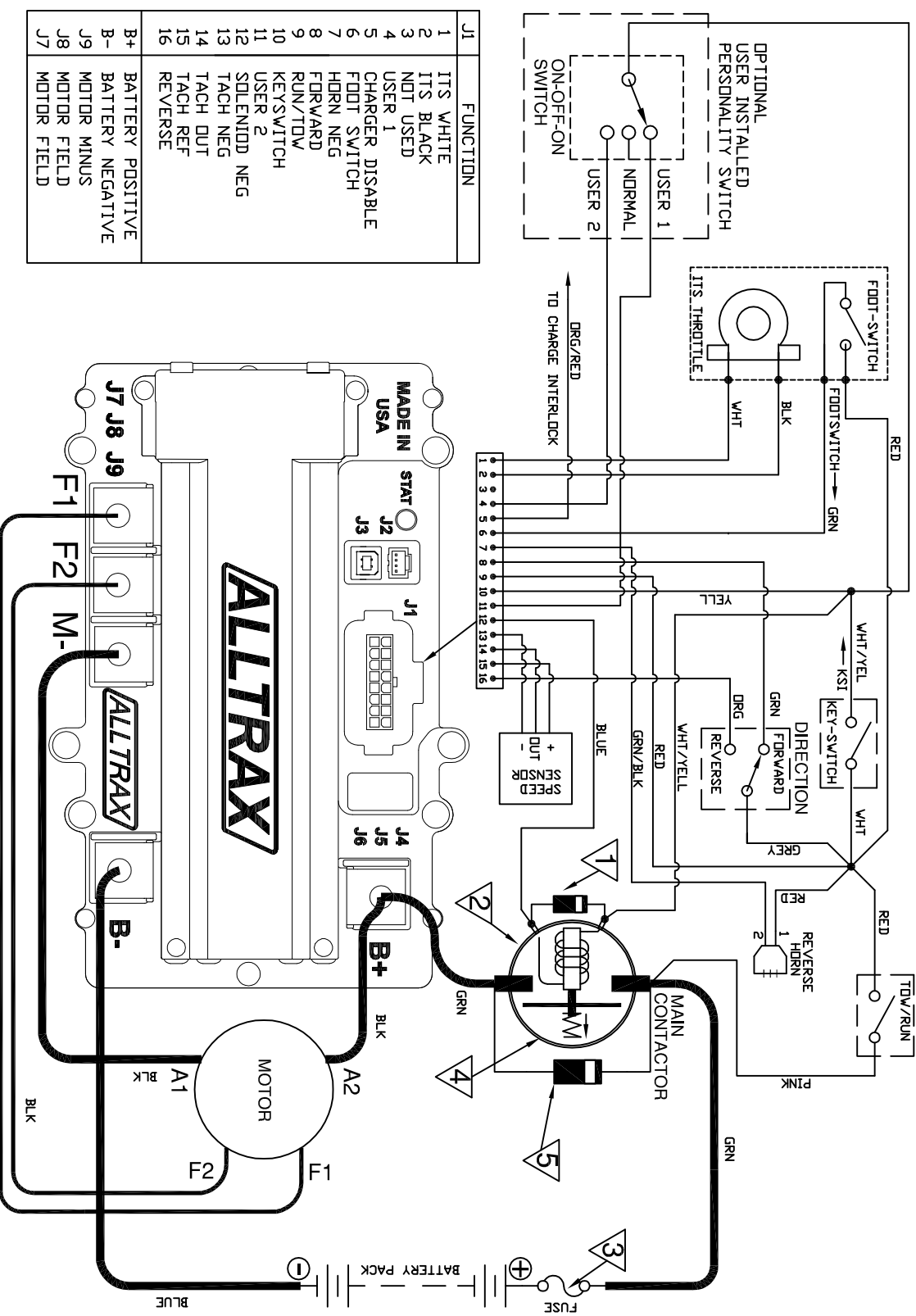


XCT to EZGO TXT 48 FOR SHUNT (SEPERATELY EXCITED) WOUND MOTORS



J1	FUNCTION
1	ITS WHITE
2	ITS BLACK
3	NOT USED
4	USER 1
5	CHARGER DISABLE
6	FOOT SWITCH
7	HDN NEG
8	FORWARD
9	RUN/TOW
10	KEYSWITCH
11	USER 2
12	SOLENOID NEG
13	TACH NEG
14	TACH DUT
15	TACH REF
16	REVERSE
B+	BATTERY POSITIVE
B-	BATTERY NEGATIVE
J9	MOTOR MINUS
J8	MOTOR FIELD
J7	MOTOR FIELD

NOTES:

- * FUSES REQUIRED FOR ALL INSTALLATIONS
- * DIODE REQUIRED ACROSS COILS / RELAYS
- * TOW/RUN SWITCH PREVENTS REGEN WHILE TOWING
- > ASSUMES FOOTSWITCH IS OPEN WHEN THROTTLE OFF
- > ALLTRAX RESERVES THE RIGHT TO CHANGE DOCUMENTATION WITHOUT NOTICE
- > ALLTRAX MAKES NO WARRANTY AS TO THE ACCURACY, SUFFICIENCY OR SUITABILITY OF ANY TECHNICAL OR OTHER INFORMATION PROVIDED
- > SEE OPERATORS MANUAL FOR MORE INFORMATION

PART NO.	DOC110-016
----------	------------

1	DIODE RATING	CONTRACTOR RATING
	1N4001 1N5408 MR754	DEM 200A DEM 400A
2	CONTACTOR RATING	CONTROLLER RATING
	DEM 200A 400A	300A DR 400A 400A TD 500A
3	FUSE RATING	CONTROLLER RATING
	ANN250 ANN400	400A DR LESS 450A DR MORE

- 4** PRE-CHARGE RESISTOR NOT NEEDED ON XCT UNITS
- 5** REGEN DIODE REQUIRED USE: ALLTRAX PN KIT-EZ-DIODE-T DR 6A6 DIODE (6A 660V)

POWER WIRE RATING	CONTROLLER RATING
6AWG-4AWG	300A
4AWG-2AWG	400A
2AWG-1/0AWG	500A

DO NOT SCALE DRAWING

REVISIONS			DWG SCALE: NTS	
REV.	ECO.	DATE	APVD	DRAWN
A	120814	021615	RC	R CSUK
B	041315	041315	RC	D.Crockett
C	050215	050215	RC	

THIS TECHNICAL DATA IS PROPRIETARY AND ALL RIGHTS ARE RESERVED. REPRODUCTION OR DISSEMINATION WITHOUT PERMISSION OF ALLTRAX INC.

FILE: DWG-XCT-EZGO-TXT-48-wiring-dia.dwg	SHEET 1 of 1
--	--------------